



Tilers Close, Redhill

£280,000





'Since purchasing the property 8 years ago, we have loved living in this apartment. Before welcoming our children, we were able to use the second bedroom for guests as it fits a double bed comfortably. Due to its great location, we regularly use Merstham station to commute to London and particularly like that the apartment overlooks the countryside. Our family has benefited from being in the catchment area for a number of good local schools and open spaces. We often walk to Mercers lake, Nutfield and Redhill. We like that the apartment is situated in a quiet cul de sac with welcoming neighbours and ample parking. The communal garden is an added bonus for our family but is rarely used by other residents. As our family has grown, we are sad to be leaving Tilers close but are keen to stay in the local area so that we can still benefit from all of the local amenities that the village has to offer.





Ideal for first time buyers or investors, this two bedroom ground floor apartment is ready for someone to move straight into without too much fuss. Heading in via your own private entrance, this spacious hallways takes you through to the living room on your right.

This is a great space, with room to add in a dining table too where you can wine and dine guests. The separate kitchen has a grey finish with a good amount of storage space to help keep the worktops clear when preparing something delicious.

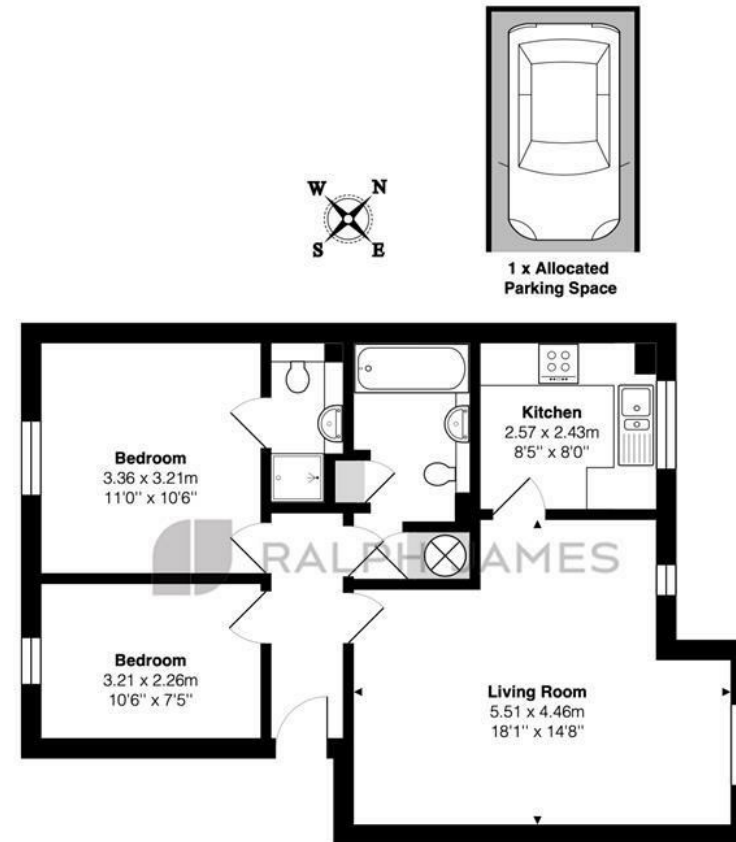
There are two double bedrooms, with the master bedroom including an ensuite with walk-in shower. The family bathroom has a large tub where you can soak the stresses of the day away of an evening.

This apartment comes with one allocated parking space. There are plenty of regular buses in the development taking you into Redhill and other local towns, along with Merstham and Redhill train stations getting you up to London in less than 40 minutes. On the weekends, you can go for a walk around Mercer Lake or hop in the car up to Gatton Park where you can admire some spectacular panoramic views.



Need to know

- Two bedroom ground floor apartment
- Communal outdoor space
- Sizeable living room with room for a dining area
- Separate kitchen
- Master en-suite and family bathroom
- One allocated parking space
- Walking distance to Redhill town as well as Redhill & Merstham stations
- Mercers lake and plenty of country walks on your doorstep.
- In on the Pond Pub just a stone throws away!



Ground Floor

Tilers Close, Merstham, Redhill

Total Area: 60.2 m² ... 648 ft²

FOR ILLUSTRATIVE PURPOSES ONLY.

Whilst every attempt has been made to ensure the accuracy of the floor plan shown, all measurements, positioning, fixtures, features, fittings and any other data shown are an approximate interpretation for illustrative purposes only and are not to scale.

No responsibility is taken for any error, omission, miss-statement or use of data shown.

The above statement applies to both 'Still Moving London LTD' and the Company or individual displaying this floor plan.

Unauthorised reproduction prohibited.

© Still Moving London LTD (www.stillmoving.london)

 RALPH JAMES

Interested?

redhill@ralphjames.co.uk
01737 765555

www.ralphjames.co.uk
@ralphjamesestateagents